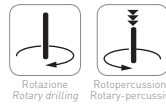
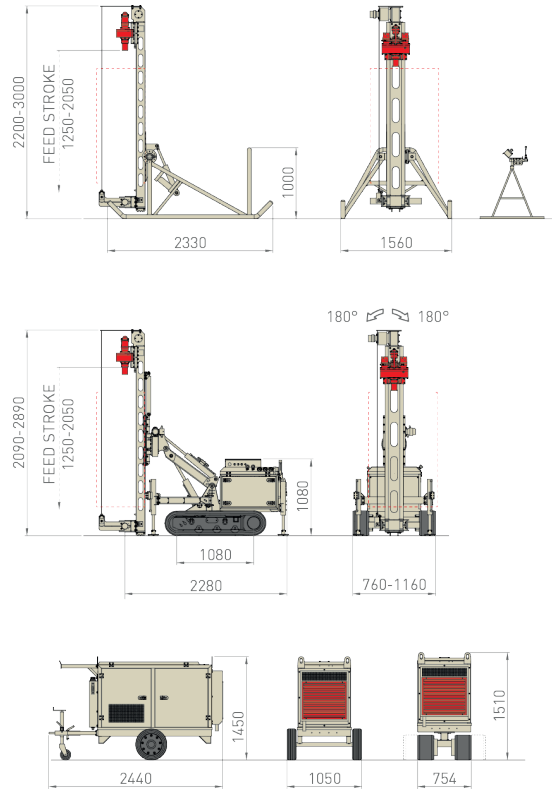
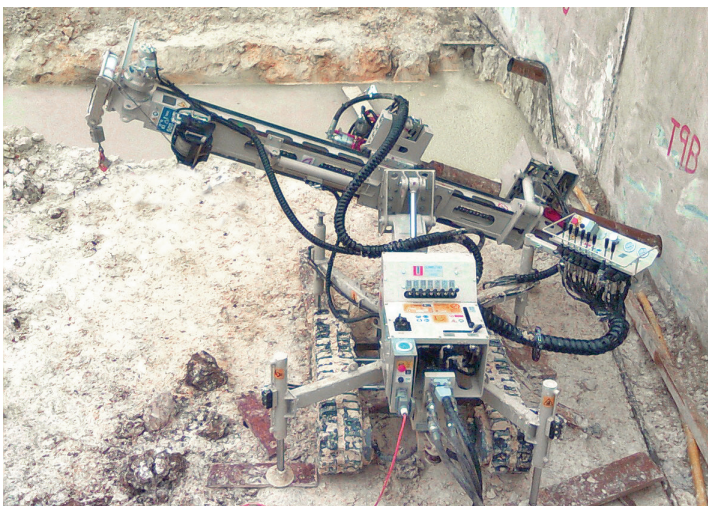




# MC 2D



	m.s.	i.s.		
Potenza Motore Engine Power	kW	HP	33	44
Livello Emissioni Emission Level	- Step 3A / Tier 4i			
Motore Elettrico Electric Motor	kW		30	
Corsa Mast Mast Feed Stroke	mm	ft	1.250 - 2.050	4.1 - 6.7
Forza di Spinta Feed Force	daN	lbs	1.200	2,697
Forza di Tiro Retract Force	daN	lbs	1.200	2,697
Coppia Rotary Rotary Torque Range	daNm	lb*ft	200 - 480	1,475 - 3,540
Giri Rotary Rotary Speed Range	rpm		80 - 580	
Serraggio Morse Clamp Range	mm	in	45 - 185	1.8 - 7.3
Peso Perforatrice Rig Weight	kg	lbs	600 - 1.500	1,300 - 3,300
Peso Centrale Power Pack Weight	kg	lbs	1.000	2,200



Specifications shown are only indicative and subjected to change without prior notice

This is a simplified data sheet that does not show all possible rig configurations. For further information [click here](#).