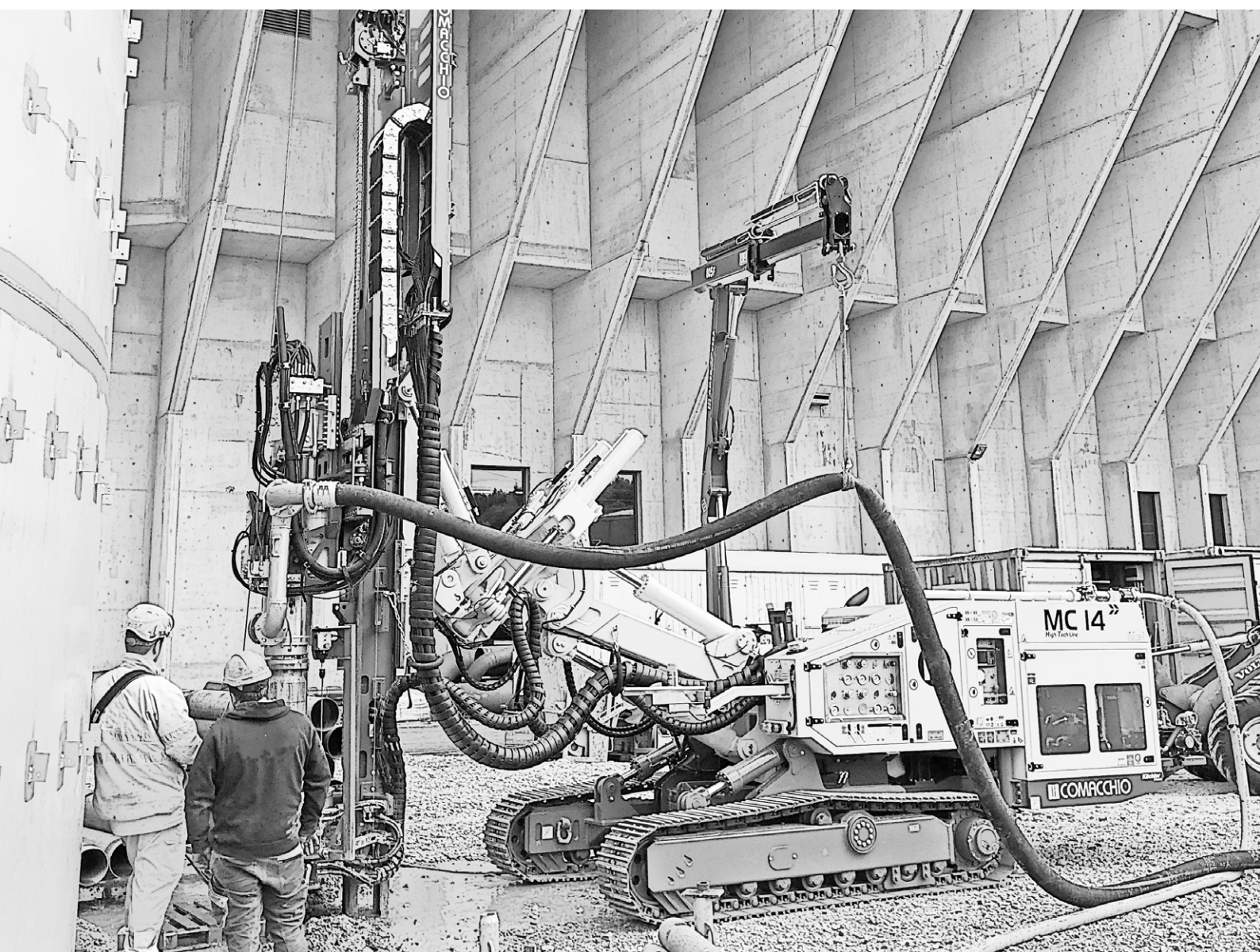


# MC 14 PATENT PENDING

Perforatrice idraulica cingolata  
Hydraulic crawler drill



*High Tech Line*

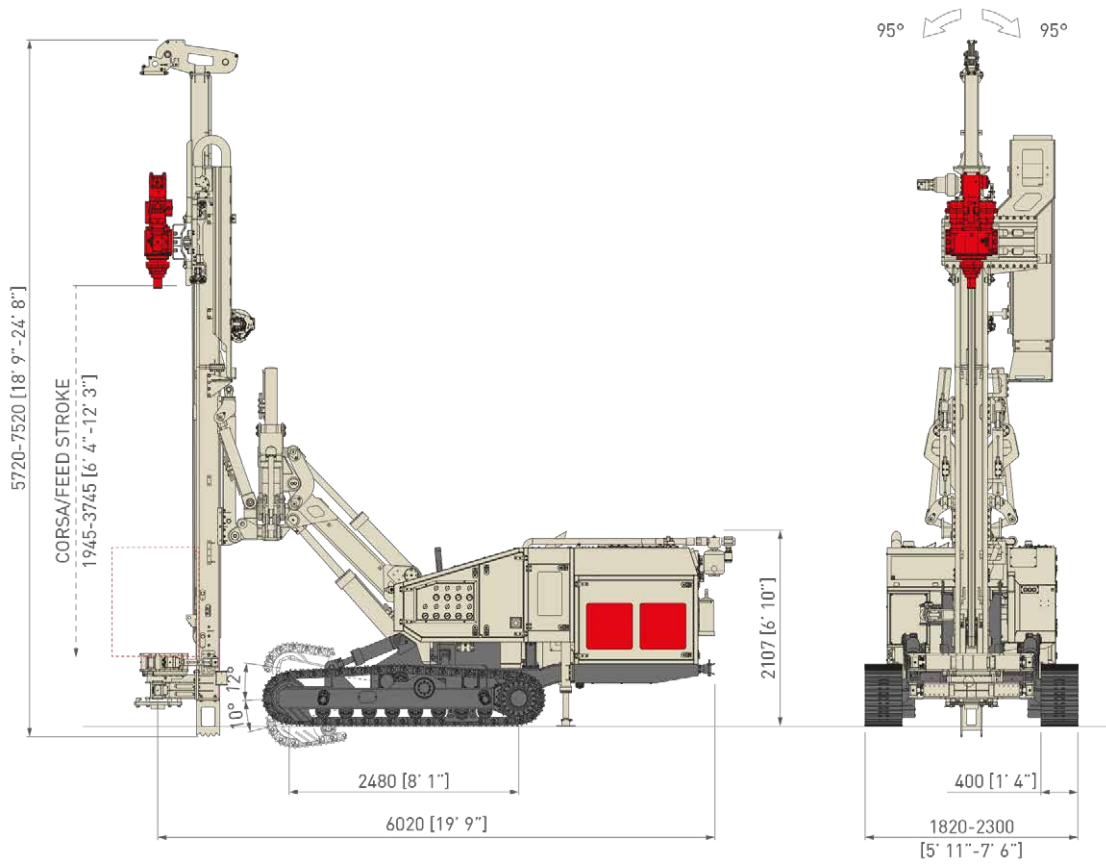


**COMACCHIO**

DRILLING HI-TECH

# MC 14

## Allestimento Standard Standard Set-Up



Rotazione  
Rotary Drilling



Rotopercussione  
Rotary - Percussive



Rotazione - Rotazione  
Rotary - Rotary



Vibro - Rotazione  
Vibro - Rotary

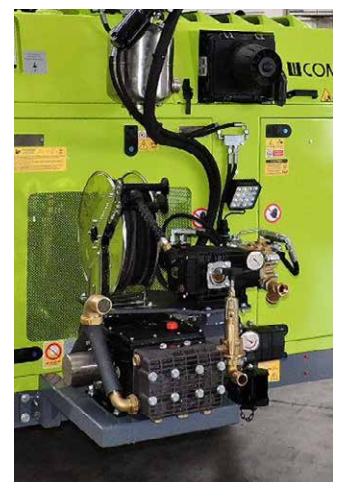
	m.s.	i.s.		
Potenza Motore Max Engine Power	kW	HP	142	190
Livello Emissioni Emission Level	- Stage 5 / Tier 4 final (HT Line)			
Corsa Mast Mast Feed Stroke	mm	ft-in	1.945 - 3.745	6' 4" - 12' 3"
Forza di Spinta Feed Force	daN	lbs	5.400	12,140
Forza di Tiro Retract Force	daN	lbs	5.400	12,140
Coppia Rotary Max Rotary Torque Range	daNm	lb*ft	1.300 - 2.325	9,588 - 17,148
Giri Rotary Max Rotary Speed Range	rpm		135 - 290	
Serraggio Morse Clamp Range	mm	in	45 - 325 / 365	1" 3/4 - 12" 19/16 / 14" 3/8
Peso Weight	kg	lbs	14.000 - 15.000	30,800 - 33,000

## Opzioni & Accessori Options & Accessories

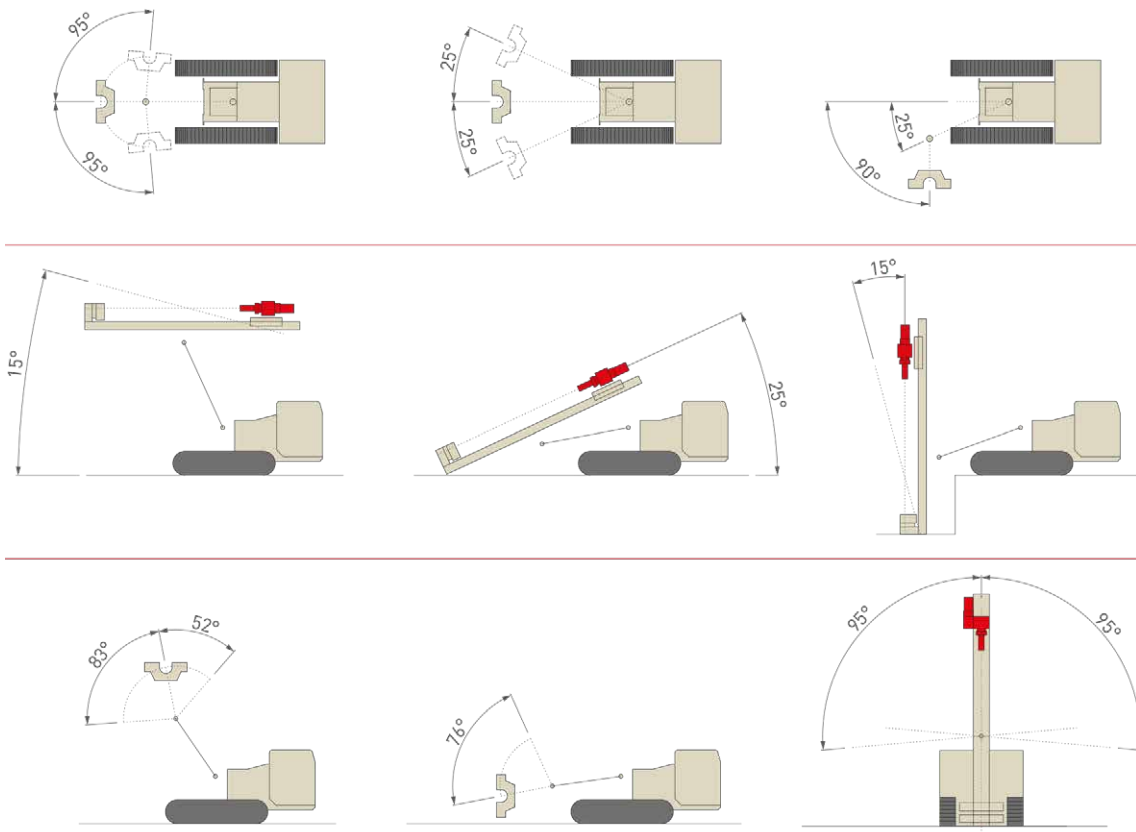
Carrello estrattore <i>Casing extractor</i>	<b>PATENTED</b>	Dispositivo sollevamento aste/tubi <i>Rod/casing lifting device</i>
Sovrapattini in gomma per cingoli <i>Rubber shoes for steel tracks</i>		Testa vibro <i>Vibro rotary head</i>
Doppia testa <i>Double head</i>		Mandrino idraulico <i>Hydraulic chuck</i>
Argano idraulico <i>Hydraulic winch</i>		Pompa schiumogeno <i>Foam pump</i>
Pompa fanghi <i>Mud pump</i>		Lubrificatore di linea <i>D.T.H. lubricator</i>
Pompa a vite <i>Screw pump</i>		Gru idraulica <i>Hydraulic crane</i>
Radiocomando <i>Remote radio control</i>		Cuffia fumi <i>Cuttings diverter</i>
Saldatrice/generatore <i>Welder unit/generator</i>		Kit lavaggio <i>Washing kit</i>
Kit pompa carico gasolio <i>Fuel filling pump kit</i>		Fari di lavoro <i>Work lights</i>
Saracinesca aria-elettro-idraulica <i>Electro-hydraulic air gate valve</i>		Kit CE <i>CE Marking kit</i>
Martello idraulico <i>Hydraulic drifter</i>		Sistema ComNect <i>ComNect System</i>



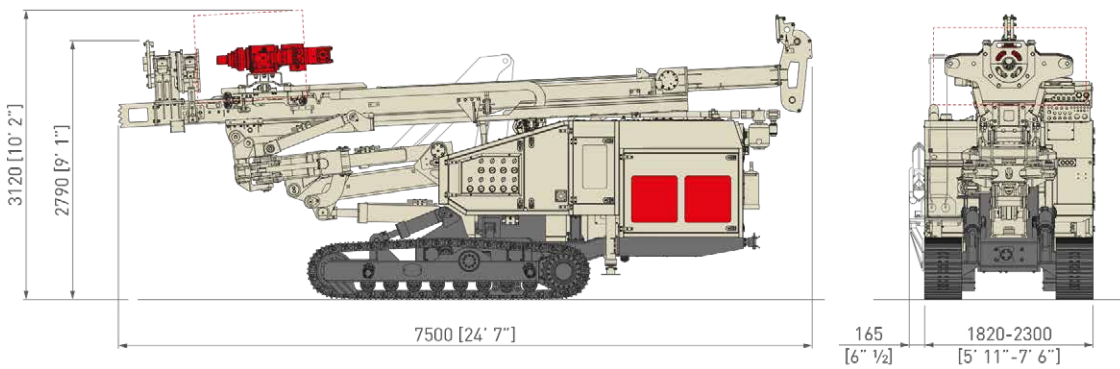
Brevettato - Patented



## Movimentazione Mast Mast Movements



## Dimensioni di Trasporto Transport Dimensions



[www.comacchio.com](http://www.comacchio.com)



**Comacchio s.r.l.**  
Via Callalta, 24/B - 31039 Riese Pio X (TV) (Italy)  
Tel +39 0423 7585 - Fax + 39 0423 755592 - [sales@comacchio.com](mailto:sales@comacchio.com)

I dati tecnici sono indicativi e soggetti a modifiche senza preavviso. La scheda tecnica non riflette tutti i possibili allestimenti della macchina. Specifications shown are only indicative and subjected to change without prior notice. This is a simplified data sheet that does not show all possible rig configurations.